

- Importación de pernos, tuercas y soportería en general.
- Importación de productos con Certificado UL.
- Bandejas Porta Cables.
- Fabricación de Postes y Cajas de Concreto.
- Fabricación de Postes Metálicos y estructuras metálicas.
- Materiales de Ferretería Eléctrica en general.

CH01 - Clevis Hanger

Size Range: 1/2" through 24"

Material: Carbon steel

Finish: Galvanized, other finish available upon request

Service: Recommend for suspension of non-insulated stationary pipe line

Approvals:

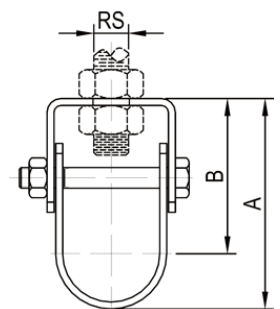
- Complies with Federal Specification A-A-1192A (Type 1), WW-H-171-E (Type 1) and MSS-SP-69 (Type 1).
- FM approved & UL/ULC Listed (Sizes 3/4" through 8")

Ordering: Specify Part Number

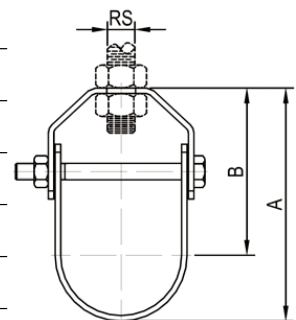


Part Number	Nominal		RS	A		B		Wt.	Max. Rec. Load			
	Pipe Size			In.	mm	In.	mm		lb	kg	lbs	N
	In.	mm										
CH01-015	1/2	DN15	3/8	M10	2 1/8	54	1 5/8	41	0.15	0.07	610	2710
CH01-020	3/4	DN20	3/8	M10	2 3/8	61	1 3/4	45	0.18	0.08	610	2710
CH01-025	1	DN25	3/8	M10	2 3/4	69	2	50	0.20	0.09	730	3240
CH01-032	1 1/4	DN32	3/8	M10	3 5/16	84	2 3/8	61	0.24	0.11	730	3240
CH01-040	1 1/2	DN40	3/8	M10	3 15/16	100	2 7/8	73	0.26	0.12	730	3240
CH01-050	2	DN50	3/8	M10	4 1/2	114	3 1/4	82	0.31	0.14	730	3240
CH01-065	2 1/2	DN65	1/2	M12	5 1/4	133	3 5/8	92	0.82	0.37	1350	6000
CH01-080	3	DN80	1/2	M12	6	152	4 1/8	105	0.93	0.42	1350	6000
CH01-100	4	DN100	5/8	M16	7 3/4	197	5 3/8	137	1.30	0.59	1430	6360
CH01-125	5	DN125	5/8	M16	9 3/4	248	6 13/16	173	2.25	1.02	1430	6360
CH01-150	6	DN150	3/4	M20	11 3/4	298	8 1/4	209	3.26	1.48	1940	8630
CH01-200	8	DN200	3/4	M20	14 1/16	357	9 1/2	242	4.45	2.02	2000	8890

NOTE: 10" ~ 24" clevis hangers are available upon request.



1/2"~1" DN15~DN25



1 1/4"~8" DN32~DN200

